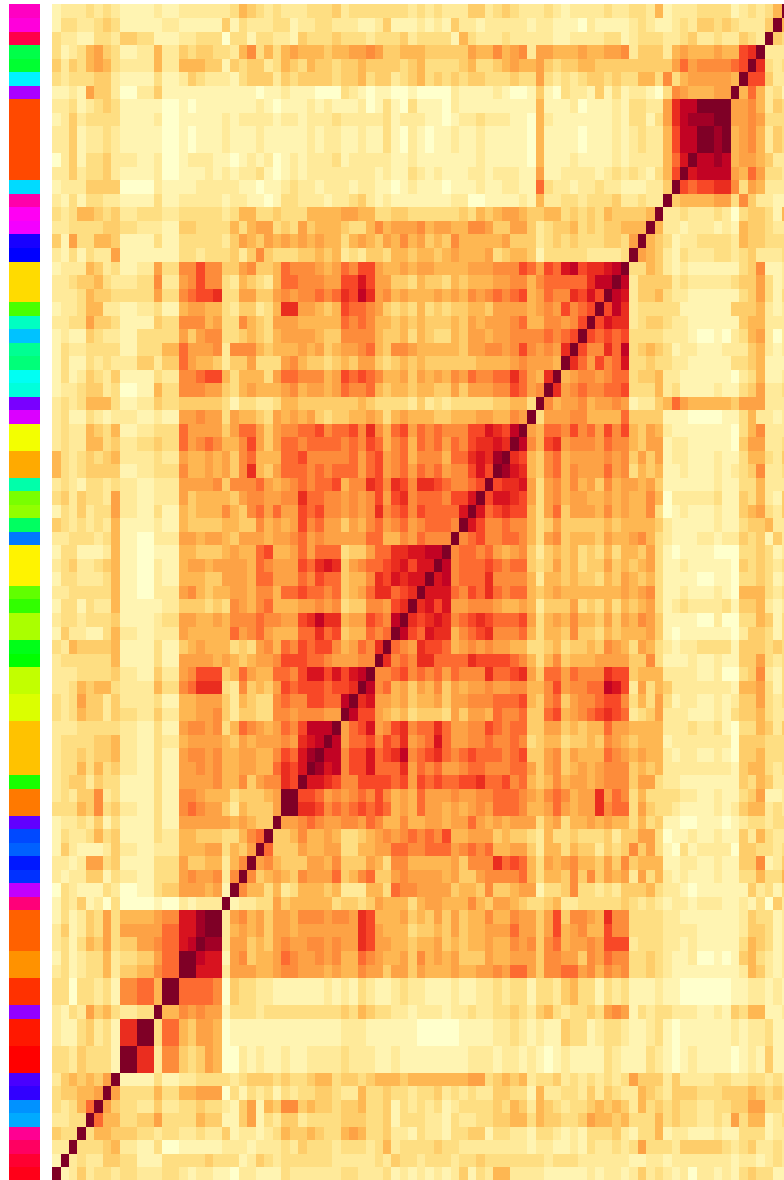
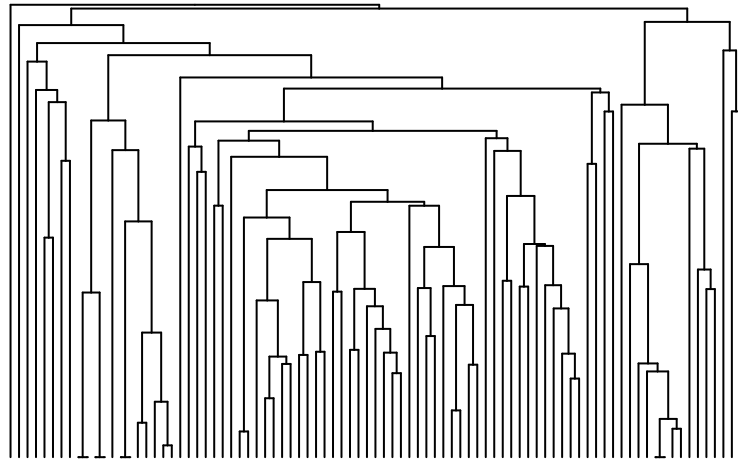
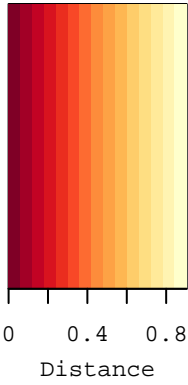


Color key



THAP1\_HUMAN.H1MO.0.C  
 RFX1\_HUMAN.H1MO.0.B  
 PAX5\_HUMAN.H1MO.0.A  
 REST\_m9\_HTB-11\_encode  
 REST\_m4\_GM12878\_encode  
 REST\_m8\_HeLa-S1\_encode  
 REST\_m2\_U97\_encode  
 REST\_m14\_known\_matrix  
 REST\_m11\_known\_matrix  
 REST\_HUMAN.H1MO.0.A  
 REST\_HUMAN.H1MO.0.A  
 REST\_m12\_known\_matrix  
 REST\_m13\_known\_matrix  
 REST\_m1\_GM12878\_encode  
 REST\_m3\_PFSK-1\_encode  
 CTCFL\_HUMAN.H1MO.0.A  
 PLAG1\_HUMAN.H1MO.0.D  
 ZFX\_HUMAN.H1MO.1.A  
 RXRA\_HUMAN.H1MO.0.A  
 MAZ\_HUMAN.H1MO.1.A  
 KLF12\_HUMAN.H1MO.0.C  
 SP2\_HUMAN.H1MO.1.B  
 KLF4\_HUMAN.H1MO.0.A  
 EGR4\_HUMAN.H1MO.0.D  
 SALL4\_HUMAN.H1MO.0.B  
 VEZF1\_HUMAN.H1MO.1.C  
 FAT21\_HUMAN.H1MO.1.C  
 ZN740\_HUMAN.H1MO.0.D  
 ZN219\_HUMAN.H1MO.0.D  
 REST\_m5\_HepG2\_encode  
 SPIC\_HUMAN.H1MO.0.D  
 ZN181\_HUMAN.H1MO.0.A  
 ZN148\_HUMAN.H1MO.0.D  
 EGR1\_HUMAN.H1MO.0.A  
 EGR2\_HUMAN.H1MO.1.A  
 ZBT17\_HUMAN.H1MO.0.A  
 EGR2\_HUMAN.H1MO.0.A  
 TBX15\_HUMAN.H1MO.0.D  
 TBX1\_HUMAN.H1MO.0.D  
 PURA\_HUMAN.H1MO.0.D  
 ZN467\_HUMAN.H1MO.0.C  
 FAT21\_HUMAN.H1MO.0.C  
 MAZ\_HUMAN.H1MO.0.A  
 KLF15\_HUMAN.H1MO.0.A  
 ZN263\_HUMAN.H1MO.0.A  
 WT1\_HUMAN.H1MO.0.C  
 SP1\_HUMAN.H1MO.0.C  
 SP1\_HUMAN.H1MO.0.C  
 KLF16\_HUMAN.H1MO.0.D  
 SP4\_HUMAN.H1MO.1.A  
 SP1\_HUMAN.H1MO.1.A  
 KLF9\_HUMAN.H1MO.0.C  
 KLF14\_HUMAN.H1MO.0.D  
 SP4\_HUMAN.H1MO.0.A  
 SP2\_HUMAN.H1MO.0.A  
 SP3\_HUMAN.H1MO.0.B  
 KLF3\_HUMAN.H1MO.0.B  
 KLF6\_HUMAN.H1MO.0.A  
 KLF5\_HUMAN.H1MO.0.A  
 KLF1\_HUMAN.H1MO.0.A  
 PROX1\_HUMAN.H1MO.0.D  
 ZN770\_HUMAN.H1MO.0.C  
 ZN341\_HUMAN.H1MO.0.C  
 ZSC22\_HUMAN.H1MO.0.C  
 TAF1\_HUMAN.H1MO.0.A  
 FLI1\_HUMAN.H1MO.0.A  
 RREB1\_HUMAN.H1MO.0.D  
 TFPD1\_HUMAN.H1MO.0.C  
 E2F1\_HUMAN.H1MO.0.A  
 E2F4\_HUMAN.H1MO.0.A  
 E2F7\_HUMAN.H1MO.0.B  
 E2F6\_HUMAN.H1MO.0.A  
 KAISO\_HUMAN.H1MO.2.A  
 KAISO\_HUMAN.H1MO.2.A  
 MBD2\_HUMAN.H1MO.0.B  
 KAISO\_HUMAN.H1MO.1.A  
 KAISO\_HUMAN.H1MO.1.A  
 KAISO\_HUMAN.H1MO.0.A  
 KAISO\_HUMAN.H1MO.0.A  
 ZN320\_HUMAN.H1MO.0.C  
 ZF64A\_HUMAN.H1MO.0.D  
 AP2D\_HUMAN.H1MO.0.D  
 AP2B\_HUMAN.H1MO.0.B  
 HEY2\_HUMAN.H1MO.0.D  
 NR1H4\_HUMAN.H1MO.0.B  
 ZNF76\_HUMAN.H1MO.0.C  
 NRF1\_HUMAN.H1MO.0.A

REST\_m9\_HTB-11\_encode  
 REST\_m4\_GM12878\_encode  
 REST\_m8\_HeLa-S1\_encode  
 REST\_m2\_U97\_encode  
 REST\_m14\_known\_matrix  
 REST\_m11\_known\_matrix  
 REST\_HUMAN.H1MO.0.A  
 REST\_HUMAN.H1MO.0.A  
 REST\_m12\_known\_matrix  
 REST\_m13\_known\_matrix  
 REST\_m1\_GM12878\_encode  
 REST\_m3\_PFSK-1\_encode  
 CTCFL\_HUMAN.H1MO.0.A  
 PLAG1\_HUMAN.H1MO.0.D  
 ZFX\_HUMAN.H1MO.1.A  
 RXRA\_HUMAN.H1MO.0.A  
 MAZ\_HUMAN.H1MO.1.A  
 KLF12\_HUMAN.H1MO.0.C  
 SP2\_HUMAN.H1MO.1.B  
 KLF4\_HUMAN.H1MO.0.A  
 EGR4\_HUMAN.H1MO.0.D  
 SALL4\_HUMAN.H1MO.0.B  
 VEZF1\_HUMAN.H1MO.1.C  
 FAT21\_HUMAN.H1MO.1.C  
 ZN740\_HUMAN.H1MO.0.D  
 ZN219\_HUMAN.H1MO.0.D  
 REST\_m5\_HepG2\_encode  
 SPIC\_HUMAN.H1MO.0.D  
 ZN181\_HUMAN.H1MO.0.A  
 ZN148\_HUMAN.H1MO.0.D  
 EGR1\_HUMAN.H1MO.0.A  
 EGR2\_HUMAN.H1MO.1.A  
 ZBT17\_HUMAN.H1MO.0.A  
 EGR2\_HUMAN.H1MO.0.A  
 TBX15\_HUMAN.H1MO.0.D  
 TBX1\_HUMAN.H1MO.0.D  
 PURA\_HUMAN.H1MO.0.D  
 ZN467\_HUMAN.H1MO.0.C  
 FAT21\_HUMAN.H1MO.0.C  
 MAZ\_HUMAN.H1MO.0.A  
 KLF15\_HUMAN.H1MO.0.A  
 ZN263\_HUMAN.H1MO.0.A  
 WT1\_HUMAN.H1MO.0.C  
 SP1\_HUMAN.H1MO.0.C  
 SP1\_HUMAN.H1MO.0.C  
 KLF16\_HUMAN.H1MO.0.D  
 SP4\_HUMAN.H1MO.1.A  
 SP1\_HUMAN.H1MO.1.A  
 KLF9\_HUMAN.H1MO.0.C  
 KLF14\_HUMAN.H1MO.0.D  
 SP4\_HUMAN.H1MO.0.A  
 SP2\_HUMAN.H1MO.0.A  
 SP3\_HUMAN.H1MO.0.B  
 KLF3\_HUMAN.H1MO.0.B  
 KLF6\_HUMAN.H1MO.0.A  
 KLF5\_HUMAN.H1MO.0.A  
 KLF1\_HUMAN.H1MO.0.A  
 PROX1\_HUMAN.H1MO.0.D  
 ZN770\_HUMAN.H1MO.0.C  
 ZN341\_HUMAN.H1MO.0.C  
 ZSC22\_HUMAN.H1MO.0.C  
 TAF1\_HUMAN.H1MO.0.A  
 FLI1\_HUMAN.H1MO.0.A  
 RREB1\_HUMAN.H1MO.0.D  
 TFPD1\_HUMAN.H1MO.0.C  
 E2F1\_HUMAN.H1MO.0.A  
 E2F4\_HUMAN.H1MO.0.A  
 E2F7\_HUMAN.H1MO.0.B  
 E2F6\_HUMAN.H1MO.0.A  
 KAISO\_HUMAN.H1MO.2.A  
 KAISO\_HUMAN.H1MO.2.A  
 MBD2\_HUMAN.H1MO.0.B  
 KAISO\_HUMAN.H1MO.1.A  
 KAISO\_HUMAN.H1MO.1.A  
 KAISO\_HUMAN.H1MO.0.A  
 KAISO\_HUMAN.H1MO.0.A  
 ZN320\_HUMAN.H1MO.0.C  
 ZF64A\_HUMAN.H1MO.0.D  
 AP2D\_HUMAN.H1MO.0.D  
 AP2B\_HUMAN.H1MO.0.B  
 HEY2\_HUMAN.H1MO.0.D  
 NR1H4\_HUMAN.H1MO.0.B  
 ZNF76\_HUMAN.H1MO.0.C  
 NRF1\_HUMAN.H1MO.0.A